



# PLEISTOCENE COALITION NEWS

VOLUME 17, ISSUE 3

MAY - JUNE 2025

- Challenging the tenets of mainstream scientific agendas -

## Inside

### PAGE 2

#### **Cultural significance of rock art**

for Saudi Arabia's Vision 2030, *Part 4*

Abdulrahman Albalawi

### PAGE 4

#### **Pleistocene Lake Manix**

in a landscape once full of lakes, *Part 2*

Tom Baldwin

### PAGE 6

**Cut stone remnants** of ice age civilization in North America

Richard Dullum

### PAGE 10

#### **Legacy of Calico**

Early Man Archaeological Project, *Part 3*

Fred E. Budinger, Jr.

### PAGE 12

#### **Member news and other info:**

Romanian and other evidence, eoliths, and anthropology in need of accountability

Dragos Gheorghiu, Brett Martin, John Feliks

#### **Links to Issues 91-93**

### PAGE 13

#### **Pleistocene civilizations**, *Part 14*

Anthony Peratt and Fay Yao

### PAGE 15

#### **Debunking evolutionary propaganda**

*Part 16* of the series in reverse (Overview & links Parts 1-15) for fossil-record-first perspective

John Feliks

Archaeologist, **Fred E. Budinger, Jr.**, Director of Calico Early Man Site in CA's Mojave Desert



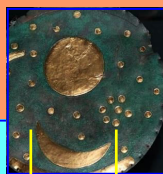
depth: 3.38 m

**Proved by Calico**  
Bias prevents mainstream archaeologists from recognizing human workmanship.

(after Dr. Louis S.B. Leakey) continues with *Part 3* of his expert series on the **200,000-year old site**.



He includes additional artifacts coated with **aluminum powder** a research tool for increasing visibility of humanly worked surfaces. See **Budinger p.10**.



**"Every society honors its live conformists and its dead troublemakers."**  
-Mignon McLaughlin

If there is a solitary object that nearly everyone who has lived has seen clearly it is **the moon**. Compared to the **full moon** which might be mistaken for any round object in ancient rock art



Might this be the oldest depiction of an animal reacting to the moon?

the **crescent moon** is unambiguous the world over. In *Part 4*, technical engineer **Abdulrahman Albalawi**, includes images well-known to the Ministry of Culture and Saudi archaeologists but not the general public. See **Albalawi p.2**.



**"It is the responsibility of scientists never to suppress knowledge, no matter how awkward that knowledge is, no matter how it may bother those in power; we are not smart enough to decide which pieces of knowledge are permissible, and which are not."**  
-Carl Sagan



Mississippian age fossils rec. by the author, Sulphur, IN

**The public must question anthropology's, biology's, and paleontology's "facts" w/o a single layer-by-layer evolutionary sequence from the invertebrate fossil record.** See **Feliks p.15**.

## - Welcome to PCN #95 -

Pleistocene Lake Manix



**Tom Baldwin** continues his enlightening overview of Pleistocene Lake Manix in California's Mojave Desert. Contrary to popularly-promoted awareness of only *one* "Ice Age" he explains that humans didn't just arrive during what was actually the *latest* ice age but during the periods between several **prior ice ages**—e.g., between the previous 2nd and 3rd or 3rd and 4th—or even farther back in time. See **Baldwin p.4**.



**Richard Dullum** continues building the case for a full-fledged **megalithic culture**

in North America. It includes not only massive rock walls or standing monoliths and dolmens but now (actually discovered several years ago) the advanced technology of stone-cut metal braces. It turns out this ancient technique had long been known in both Eastern and Western Hemispheres (S. America, Africa, Europe, the Middle East, Asia). Remarkably, the Montana site reveals dovetail clamps as used worldwide, e.g., Egypt, Greece, China and Cambodia. See **Dullum p.6**.



**Double-T style** stone clamp cuts, ancient Bolivia



**Dovetail style** stone clamp cuts, Montana, U.S.

Detail: Magical Andes Photography

Discovered by Nick Tenney 2019

In their **Part 14** installment, plasma physicist and former Acting Director (U.S. National Security) Nuclear Non-Proliferation, **Dr. Anthony Peratt** (PhD) and colleague, **Fay Yao** (LMS, M.A.) conclude this new portion of their series to set up for conclusion per their *Part 1* plan (PCN #82, 2023) —a verbatim reprint of Dr. Peratt's 2-part "The Pillars of Heracles."



Part 14 discusses citation matters involving the epic Hindu poem **The Mahabharata** and its believed references to devastating weapons that may have been used by early Indian civilizations, e.g., from Mausala Parva:



"Samva actually brought forth an iron bolt through which all the individuals in the race of the Vrishnis and the Andhakas became consumed into ashes....a fierce iron bolt that looked like a gigantic messenger of death."

From the beginning of their series, Peratt and Yao have encouraged objectivity in the mix of myth, history and science even with controversial topics. This includes such as the long presumed myth of Plato's Atlantis or sophisticated ideas or technologies in the distant past in general. See **Peratt and Yao p.13**.

# Cultural significance of rock art for Saudi Arabia's Vision 2030 *Part 4* By Abdulrahman Albalawi, technical engineer

**"The rock art of Saudi Arabia's**



**Tabuk region features some of the earliest depictions of domesticated dogs and are estimated to date back 8–9,000 years, i.e. to the pre-Neolithic."**

### Dog barking at the moon

Of the few proposed lunar calendars in cave art or bone or antler engravings (starting perhaps 20,000 years ago) the oldest may be the famous horse with a line of dots believed to represent the lunar cycle at Lascaux Cave, France, dated 15,000 years old. However, these strings or similar collections of dots might still mean something else. The focus on such evidence tends to revolve around number counting and may not actually represent the moon.

Some evidence that is new to me photographed by Malek AISulaimi MA (Dir. of Cultural Heritage at HRDA) is apparently well-known to Saudi archaeologists but not the general public. It could be what I might call depiction of a potential 'eye-witness.' By that I mean an eye-witness *identifying the moon* if we are willing to combine several types of evidence, the depicted eye-witness being none other than a dog, **Fig. 1**.

In **Fig. 2**, I offer two modern depictions of wolves howling at the moon (equally applicable to barking dogs). Notice that the bottom picture shows a howling wolf with the moon going through its phases. Compare that with the *crescent moon* and the rounded object in Fig. 1 very likely representing the *full moon*. They give the impression of two different human artists trying to express the same thing though possibly separated by thousands of years.

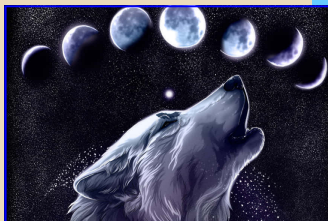
I added **Fig. 3** in case there was doubt as to how the crescent moon was depicted between pre-Neolithic Saudi Arabia and modern times. It is a Sumerian image the mainstream regards as the oldest *certain* image of the moon. I think Fig. 1, if authentic, may qualify better.

### x2 Potential—Eclipses

**Fig. 4** suggests like in modern times images or symbols can have more than one meaning



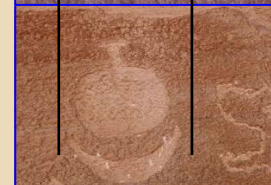
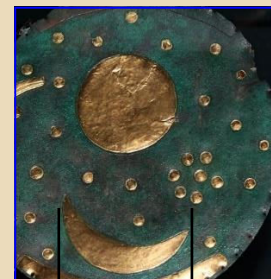
**Fig. 1.** Wolves and dogs alike are known internationally to respond to the moon. Though undated, but perhaps 8–9,000 years old, might this be the oldest depiction of a dog barking at the moon? NW Saudi Arabia rock art image: Malek AISulaimi.



**Fig. 2. Top:** One of countless examples showing how well-known is the habit of dogs and wolves to bark or howl at the moon. Image: freeimages.com. **Bottom:** Artist's composite of a wolf howling at the various phases of the moon; wallpapers.com. Compare with the similar elements of the Tabuk rock art with the dog.



**Fig. 3.** Crescent moon on cylinder seal of Sumerian King Ur-Nammu (lunar deity) may be oldest *certain* image of the moon. Photo: Steve Harris; Wikimedia-Commons; Crop.



**Fig. 4. Top:** Nebra Sky Disk (Germany) showing among other things crescent moon and Pleiades star cluster (*PCN demonstrated internationally duplicated in rock art*). **Middle:** Possible two-phase depiction of solar eclipse with corona and crescent phases; NW Saudi Arabia. Photo: Malek AISulaimi. **Bottom:** Presuming right image is reaction to left, detail of proposed dog barking at the moon or an eclipse. Photo: Malek AISulaimi, NW SA.

> [Cont. on page 3](#)

# Cultural significance of rock art for Saudi Arabia (cont.)

**"It is a Sumerian image the mainstream regards as the oldest certain image of the moon. I think Fig. 1, if authentic, may qualify better."**

or interpretation. Especially artists—in all generations—seem to often be attracted to enriching their works with additional meaning (see my [Part 2, Jan-Feb 2025](#)). There is no reason to suspect this wasn't also true in prehistoric times when rock art was likely a premier form of expression.

Perhaps the above is why not everyone is convinced as to what the central round object in the Nebra Sky Disk is with the most

popular contenders being the full moon or the sun.

There is a recently published paper (Guagnin et al. 2017, "Pre-Neolithic evidence for dog-assisted hunting strategies in Arabia," *Journal of Anthropological Archaeology*) about the earliest domestic dog depictions. Although it notes the first dogs depicted with leashes and even suggests some depictions are of individually-known dogs, the paper stays pretty much in the realm of dogs serving as human helpers. I believe the evidence in Fig. 1 above takes the story to a deeper or more communicative level, namely that the dog I suggested was reacting to the moon was perhaps reacting to even more than that—which may also be depicted in the rock art panel—that is, a solar eclipse, as many animals are known to respond to eclipses.

### Possible solar eclipse

Solar eclipses are special near-to-earth astronomical events that are relatively uncommon in world rock art. There is, though, what is beginning to be accepted as

an important well-documented example, a petroglyph in Chaco Canyon, New Mexico. The apparent depiction is on a boulder called Piedra del Sol. The rock art shows a central solid disc which is interpreted

howling at the moon is a well-known image in modern times and no doubt witnessed since the beginning of human relationships with dogs which, of course, came to us through the wolf line.



**Fig. 5. Top Left:** Possible 2-phase rock art depiction of a solar eclipse showing either full sun or corona above and crescent below; NW Saudi Arabia, Malek AlSulaimi. **Top Middle:** Modern sun symbol. **Bottom Middle:** Sun eclipse corona. **Upper Right:** 1231 eclipse: Valcamonica, Italy (Xavier Jubier-Free). **Bottom Left:** Proposed image of a still or barking dog during an eclipse. Photo: Malek AlSulaimi, NW Saudi Arabia, detail.

The new evidence in this Part 4 inspires me to look at rock art even more open-mindedly. Early on, my interest has been to encourage the study of rock art to understand its meanings around the world. I believe

as the eclipsed Sun embellished with swirling extensions apparently surrounding the eclipsed sun believed to possibly represent the *solar corona*. Some interpretations also suggest a dot above the eclipse, potentially representing the planet Venus.

**Fig. 5, Top Left**, is one of AlSulaimi's images that suggests to me a depiction of the radiant sun. **Top Middle** I inserted to compare what a modern symbol of the sun looks like. For this interpretation I suggest the crescent at the left may actually be the sun's crescent phase of a solar eclipse with the dark area representing the moon where it is passing in front of the sun. We need to remember they didn't have Photoshop in those days leaving a very limited number of ways a solar eclipse might be creatively depicted.

### Reflections

There is always the possibility the dog, perhaps in a slightly different style from the moon objects, was created at a later date. Another interesting fact is that a dog barking at the moon or the variation of a wolf

astronomy is a way to show rock art from different cultures may have unexpected things in common. See my work with the late Ray Urbaniak and the [Pleiades star cluster](#) (PCN #73).

The rock art with dogs, recently mainstream-published, supports the well-known context of dogs helping humans in the hunting of large animals as seen in my [Part 1: Figs. 4-6](#) (PCN #92, Nov-Dec 2024). Further evidence the wearing of leashes indicating they were trained and controlled is also interesting. However, a possible dog depicted barking at the moon seems an invitation to look at rock art more closely, perhaps to find some greater meaning.

ABDULRAHMAN ALBALAWI is a technical engineer with a passion for rock art (including inscriptions) and history. He has been discovering and photographing rock art in the Tabuk region of northwestern Saudi Arabia since 2014. In 2019, Albalawi established a Facebook group devoted to rock art to help promote its study and lead to a greater understanding of the possible meanings behind rock art worldwide. <https://www.facebook.com/groups/463030367655466/posts/840031606622005/>

# Pleistocene Lake Manix in a landscape once full of lakes, Part 2

By Tom Baldwin

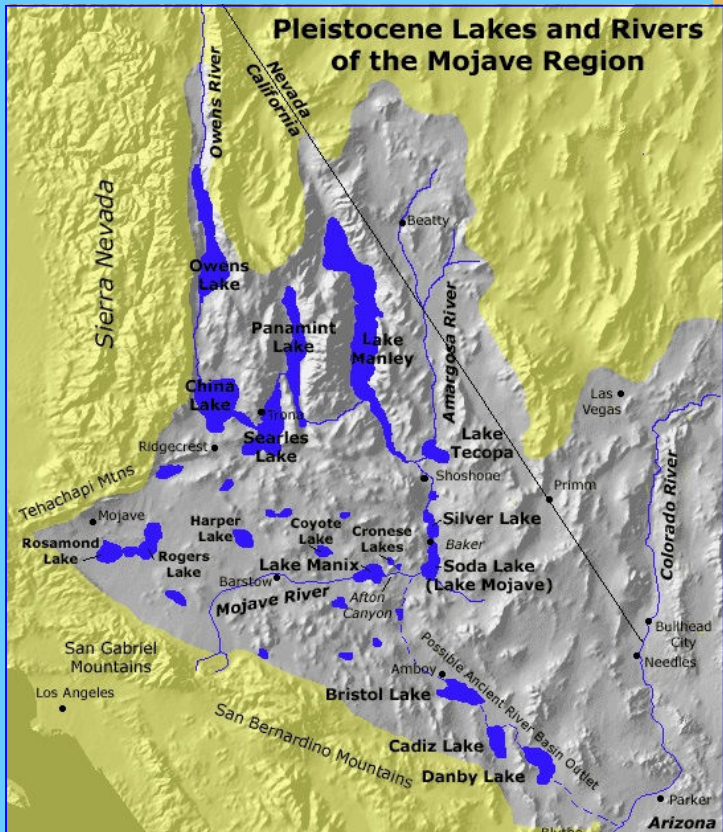
**"Humans didn't just**



**get here during the latest ice age, they probably first arrived during the interglacial between the second and third or third and fourth previous ice ages, or even farther back."**

Last issue of *Pleistocene Coalition News*, I devoted my portion of the newsletter to Lake Manix. During the Pleistocene, what is today one of the driest parts of the Southwest—the Mojave Desert—was quite a different place. It was well watered, and contained many lakes, and was a haven for the plants and animals early man needed to live. **Fig. 1** will give you an idea just how well watered the area from what is today Death Valley south to almost San Diego and east into Nevada is. I believe that it is Minnesota that is known as The Land of a Thousand Lakes. Well, during the ice ages, Minnesota was buried under a mile thick layer of ice and couldn't retain the title. but the southwest kept the tradition alive as you can see. Pictured are just the larger lakes. There must have been many smaller ones too.

Lake Manix first formed about half a million (or 500,000) years ago. Its waters were supplied by the Mojave River, which to this day drains the San Bernardino Mountains. The lake became the home to various fish, and its shoreline teemed with animals. It was the perfect place for Early Man to stop their migrations and settle down. And so they did, and a long time ago too. Stone Tools such as those discussed in Fred Budinger's article (this issue), have been tested with results in ages for the tools of about 200,000 years. That means humans didn't just get here during the latest ice age, they probably first arrived during the interglacial between the second and third or third and



**Fig. 1.** Location of Lake Manix lower center about 25,000 years ago. The map shows how well-watered this desert region was during prehistory. USGS.

fourth previous ice ages, or even farther back.

Lake Manix no doubt rose and fell with the coming and going of the ice ages. About 25,000 years ago it reached it highest, deepest point. It was then that the natural dam at the lake's eastern end gave way. Did the lake overflow and the overflow wash out the dam? Did an earthquake destroy the dam (that portion of the desert is full of faults)? Did some other cause destroy the dam. We do not know. However, the lake did drain. It must have been quite a sight. I like to think of it as God's water feature, as Manix's water flowed down and filled Soda Lake which lies a little lower than Manix. When

Soda Lake was full it overflowed into the next lowest lake, Silver Lake. And when Silver Lake filled it then drained into Lake Manly (today's Death Valley).

That's a lot of water moving. Manix had a surface area of 91 square miles, and was about a hundred feet deep in spots, that much water on the move must have been quite a sight to see.

In **Fig. 2** on the following page we have a picture of the now dry lakebed. You can see that at one time the lake filled much of this carved out area. The old shoreline can be seen at the upper left of the picture.

Till about 25,000 years ago the lake filled this basin. Now, the lake's water

> [Cont. on page 5](#)

## Pleistocene Lake Manix in a landscape once full of lakes (cont.)

**"We know the humans left too, for**

source—the Mojave River—still meanders through the lake bed washing away the old lake bottom sediments, creating the tortured landscape you see in Fig. 2.

animals being forced to leave the area was a tragedy. However, the tragedy was not just for the ancient people of the lake, but for modern ar-

TOM BALDWIN, an award-winning author, educator, and amateur archaeologist living in Utah, also worked as a successful newspaper columnist. He has been a central writer and copy editor for *PCN* since 2010. He



**Fig. 2.** Panoramic view of the now dry lakebed of Lake Manix (in the Mojave Desert outside Barstow, CA). You can see that at one time the lake filled much of this carved out area. At the upper left of the picture can be seen the old shoreline. Photo: Wikimedia Commons.

**we find their stone tools above the old lake's shoreline but don't find any below the shoreline."**

Sometimes the river comes to the surface. Other times it flows underground. The river has cut side canyons and rounded hills. One reason that the eroding of the old lake bed is so extensive is that the area was once highly volcanic. At times the area was covered several feet thick in volcanic ash. The ash formed a deposit called tuff which is pretty soft and can almost be crushed in your bare hand. It is easily washed away leaving formations like that pictured in Fig. 2.

Though the draining of Manix must have been an awe inspiring sight, it was a tragedy for the early people that dwelt along its shore. When the lake dried up the fish died and the animals that lived along the shore left the area looking for a place with water and game. We know the humans left too, for we find their stone tools above the old lake's shoreline but don't find any below the shoreline.

Interestingly enough, for those early people and the

archaeologists too. You see, most modern archaeologists think that man only arrived in the Americas about 11,000 years ago (that school of thought is called the Clovis Theory). However, we find Early Man's tools above the old Lake Manix's shoreline but don't find those tools below the shoreline, where the water was. This tells us people lived along the shoreline when there was a shoreline to live along, but not when there was no longer a coastline, then they moved on. That happened 25,000 years ago, 14,000 years earlier than 'Clovis' allows for.

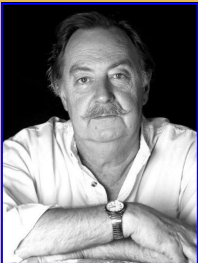
It follows that man was hunting and gathering along the lake shore not just 11,000 years ago, but almost a quarter million or 250,000 years. The date for the draining of Lake Manix throws the Clovis theory into the brink, or should I say into the lake?

was actively involved with the Friends of Calico (maintaining the controversial Early Man Site in Barstow, CA) since the early days when famed anthropologist Louis Leakey was the site's excavation Director (Calico is the only Western Hemisphere site excavated by Leakey). Baldwin's book, [\*The Evening and the Morning\*](#), is a very well received and entertaining fictional story based on Calico. Apart from being one of the core editors of *PCN*, Baldwin has published over 60 prior *PCN* articles focusing on the intelligence of early humans, including *Homo erectus*, as well as early man in the Americas. Links to all of Baldwin's articles can be found at: [https://pleistocenecoalition.com/index.htm#tom\\_baldwin](https://pleistocenecoalition.com/index.htm#tom_baldwin)

# Cut stone remnants of ice age civilization in North America

By Richard Dullum (B.A. Biology)

"This evidence, like



that of so many other ancient sites around the world is pointing toward North America as having had its own pre-history of megalithic culture."

**In several prior installments beginning with the story of the Montana Megaliths**

([PCN #83](#), May-June 2023) I have introduced factual evidence leading in a direction contrary to mainstream beliefs about early North Americans. This evidence, like that of so many other ancient sites around the world, is pointing toward North America as having had its own prehistory of *megalithic culture*. Not only is the evidence a matter of large standing stones or walls, as are more well known, but now, a technology more advanced than commonly attributed to these people, known by such names as *stone-joint metal clamps*, *keystone cut clamps* or just *keystones* (confusingly, the latter is better known as the final top wedge of an arch). Either way, it is essentially the locking together of large stones by way of metal braces.

**Different perspectives of Tryst Falls suggest same megalithic culture**

The top photo of **Fig. 1** (courtesy of Mick and Daisy Hobday) gives a birds-eye view of the obviously deliberate perfectly straight enigmatic cuttings at Tryst Falls, Clay Co., Missouri. For more details on the picture see Part 1 ([PCN #93](#), Jan-Feb 2025) and Part 2 ([PCN #94](#), March-April 2025). The bottom photo (courtesy of Carl Adam Carter), aside from showing the absolute tape rule measurement of the track in cross-section, emphasizes the incredible squareness and flatness of the cut. It is another confirmation the Tryst Falls

cuts truly do appear to be mechanically done.

of this area. That it is now visible is due to the course



**Fig. 1. Top:** Overhead drone shot of the longtime enigmatic cuttings at Tryst Falls, Clay Co., Mo. (courtesy of Mick and Daisy Hobday) as detailed in *Parts 1–2*. It shows the sharpness and perfect straightness of the cuttings. **Inset:** General location of width measure shown in the lower photograph. **Bottom:** This photo—besides the absolute measurement of the track in cross-section—shows the incredible squareness and flatness of the cut that truly appears to have been mechanically done. Photographs courtesy of Carl Adam Carter.

The carved parallel lines across the top of the table rock shelf at Tryst Falls, 5' apart, run 50' straight and across a foot-wide recent break, then head 30 degrees to the left for another 20', terminating on the shelf edge at the edge of the pool 15' below, where several large chunks of rock can be seen lying in the water. This has been the landscape of Tryst Falls since the 1800's settlement

of Williams Creek, occasionally flooding over the area and washing away the glacially deposited sediments covering it. We surmise this from the pink granite glacial erratics found at the site by Carl Adam Carter, since pink granite is not naturally found in this area. See **Fig. 2** on the following page.

No industrial machinery of

> [Cont. on page 7](#)

# Cut stone remnants of ice age North America (cont.)

**"There wasn't a wagon wheel going over and over the same track here... no trail going up to it or over it...so how they can be called 'cart-ruts' is nothing but imagining from the familiar."**



**Fig. 2.** Pink granite glacial erratics eroding out of the soil nearby Tryst Falls, Dec. 2024, and discovered at the site by Carl Adam Carter. Williams Creek, occasionally floods over the area and washes away the glacially deposited sediments covering it. We surmise this as pink granite is not naturally found in this area. Photo courtesy of Carl Adam Carter.

**over and over the same track here... no trail going up to it or over it...so how they can be called 'cart-ruts' is nothing but imagining from the familiar."**

the period which could make the carved 'ruts' was ever transported and used here.

There wasn't a wagon wheel going over and over the same track here because there's no trail going up to it or over it. Williams Creek requires a bridge for wheeled vehicles to cross here, so how they can be called 'cart-ruts' is nothing but *imagining* from the familiar.

Anyone familiar with properties of Pennsylvanian or even Cretaceous limestones, such as found in Austin, Texas's bed of Bull and Brushy Creeks, knows that even several thousand, iron rimmed wagon wheels on loaded wagons

would result in a random pattern of wear and how could one thousand wagons all go in the very same 5 1/2" wide track, to carve as deeply as the ruts are in Austin? To drive this point home, I showed one rut that was at least 12" deep in places (see [PCN #89, May-June 2024, p. 7, Fig. 3](#)). Folks, this isn't volcanic tuff. **Fig. 3** shows undoubted cart-ruts.

Tryst Falls *is*; *never* has the rock *there* felt the impact of large machinery in our modern era, which is the *only* era in which its existence is known. *Never* would the building of a mill involve the cutting into the table rock of parallel 50' grooves; it would serve no practical function. What is left to posit as to when the markings cut into the rock at Tryst Falls is *culturally pristine*.

The Eemian Interglacial

saw global temperatures at and well above our present levels, meaning that civilized life in North America could have arisen during that 15,000-year period or could have been introduced from elsewhere on earth that wasn't devastated by glaciers.

Our own machine age took just *hundreds* of years to develop, yet the known history of *Homo sapiens*, which the mainstream acknowledges, extends back at least 350,000 years and seems to go further, as noted in my previous article here, [PCN #94, Mar-Apr, p. 9](#), reference to the Happisburgh, U.K. footprints, perhaps to 950,000 years. Humans as intelligent as we could have had several notable civilizations rise and fall during those times.

**An industrial age during the Ice Age?**

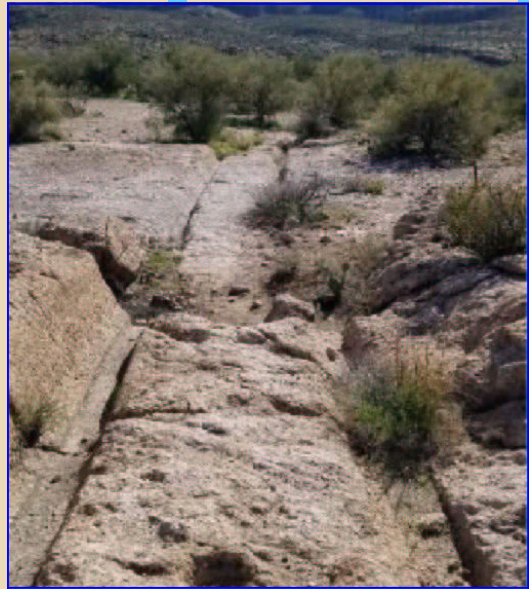
Astrophysicist Adam Frank and climate scientist Gavin Schmidt proposed their "Silurian Hypothesis" in a 2018 paper published as Schmidt and Frank in 2019. The premise in the subtitle is pretty straightforward:

"Would it be possible to detect an industrial civilization in the geological record?"

—*International Journal of Astrobiology*. 18 (2): 142–50.

In that paper Schmidt and Frank explored the possibility of detecting an advanced civilization from before hu-

mans appear in the geological record. Their argument is



**Fig. 3.** These are confirmed cart-tracks in welded volcanic tuff, left by 19-mule trains loaded with silver ore, from the Silver King Mine, Superior, Arizona. Photo courtesy of Sue Lynn Blanchard.

that there has been sufficient fossil carbon to fuel an industrial civilization since the Carboniferous Period (350 million years or so ago). However, they suggest that finding direct evidence, such as technological artifacts, is unlikely due to the presumed rarity of fossilization and Earth's exposed surface. Instead, they suggest, "researchers might find indirect evidence, such as climate changes, anomalies in sediment, or traces of nuclear waste" (Wikipedia). But I would ask a crucial question then, what about evidence of cut stone?

**Carving/cutting megalithic stone is a civilization marker**

However, neither author mentioned carving in stone, as a signal that a past advanced civilization might have existed. Nor did either mention obviously built megalithic walls as another.

Stonework clearly intentionally built in culturally un-

> [Cont. on page 8](#)

# Cut stone remnants of ice age North America (cont.)

**"I count eight cuts**

touched areas of the earth such as North America—where the inhabitants were never known to build in stone—

low ledge on the Boulder Batholith (**Fig. 4**). *I count eight cuts forming dovetails such as are seen in common modern*

remains as tight as when it was assembled.\*



**Fig. 4.** Remarkable evidence of ancient keystone block technology. Triangular cuts in highly eroded granite discovered by Nick Tenney, Boulder, MT.

**forming dovetails such as are**

thus is culturally pristine (as in SW Montana), and a clear sign of advanced civilized people deriving from that area or coming from elsewhere on earth. I have documented this in eight articles in PCN issues #83–94.



**Fig. 5.** Observed by Mesoamerican archaeologist Neal Steede PhD (in Bill Cote's *The Mysterious Origins of Man*) this freshly brushed-off bottom course surface of blocks on a wall at Puma Punku, Bolivia, whose vertical stone-to-stone joints are so tight, a pin cannot penetrate the joinery.

However, I haven't shown the absolutely astounding

**seen in common modern carpentry today."**

photo-discovery taken on the Boulder Batholith. You know how you can't 'un-see' something? I want to show the undoubtedly megalithic connection Montana has with other sites around the world:

**Stone-joint metal clamps or keystone technology**

In 2019, explorer and photographer Nicholas Tenney discovered a set of *keystone cuts* in highly eroded granite blocks scattered across a shal-

*carpentry today.* In this case, stones were placed side by side to form a flat surface on the ground, after which the dovetail-shaped cuts were made where metal crampons or 'staples' were no doubt placed or possibly poured molten, into the double dovetails. This would effectively have kept the blocks from spreading apart; to hold their planned position.

**Keystones metal**

The first time I ever saw examples of these 'staples' or keystone cuts was in 1996 when NBC aired the Bill Cote production *The Mysterious Origins of Man*. I watched as Mesoamerican archeologist Neal Steede, PhD, and a Bolivian worker pulled out a stone block laid on top of a wall's foundation at the site of Puma Punku in Bolivia, South America, while 'restoration' work was being done revealing this.

**Fig. 5** is a still from Bill Cote's *The Mysterious Origins of Man*—the television special in which Pleistocene Coalition co-founder, Dr. Virginia Steen-McIntyre, made her public debut. It shows a freshly brushed-off surface of bottom course of blocks on a wall whose vertical stone-stone joints are so tight, a pin cannot penetrate the joinery.

One block's corner is broken away, but the staple allows no movement; the joint between the blocks

\***Related:** From the program's filmmaker, see Bill Cote's article in PCN#11 (May-June 2011), [The Valsequillo Saga and the Hueyatlaco site: Bill Cote's involvement.](#) See also Dr. Neil Steede's 2-part PCN series [The Kaw River People, Part 1](#) (PCN #35, May-June 2015) and [Part 2: Tools and skulls](#) (PCN #36, July-August 2015).

In **Fig. 6**, Mesoamerican archaeologist, Neal Steede, holds a metal staple from the cut seen in Fig. 5. The metal was determined to be a type of bronze. This gives a suggestion of what the similar cuts in Montana may have contained. Only extremely tight-fitting blocks have this feature, meant obviously to keep the perfectly made mated edges as immovable as possible.

**Montana compared with clamp cuts worldwide**

In the case of the Montana example in Fig. 4, I am inclined to think the blocks were part of a floor that extended beyond the edge of the shelf when the floor was first made. See the comparison example floor clamping



**Fig. 6.** Mesoamerican archaeologist, Neal Steede, holding a metal staple from the cut at Puma Punku, Bolivia, seen in Fig. 5. Testing determined the fastener was a type of bronze.

in **Fig. 7** (on the following page) from the site of Puma Punku, Bolivia, which is

> [Cont. on page 9](#)

# Cut stone remnants of ice age North America (cont.)

5,240 miles away in South America. On first hearing the



**Fig. 7.** Joint groups floor foundation, monolithic blocks, fastened together with special clamps at Puma Punku 5,240 miles from Montana. Wikimedia Commons.



**Fig. 8.** Clear "double-T" or "dumbbell"-style clamp cut, Puma Punku, per the styles discussed in the comprehensive 2020 paper by Kim Hongnam. Magical Andes Photography.

Montana evidence may seem one-of-a-kind absurd, impractical or easier to dismiss due to our centuries of wrongs beliefs about the prehistory of North America. As I noted on page 1 of this article, these stone clamp cuts in Montana may actually be all of the evidence needed to show that North America had megalithic stonework traditions like other advanced cultures worldwide.

**Figs. 8–10** show only a few examples of hundreds of very similar stone-joint

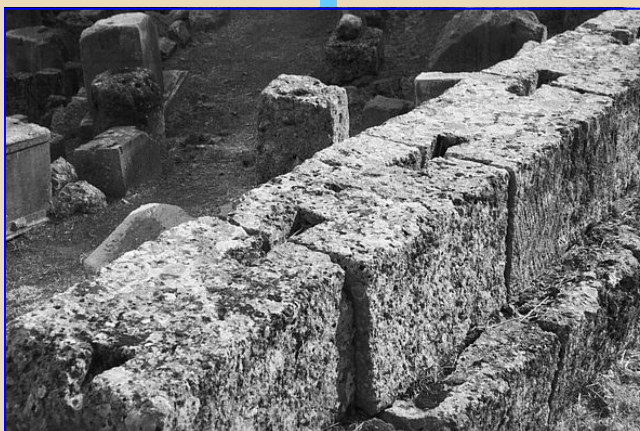


**Fig. 9.** Close-up of the dovetail-style clamp cuts, Giant's Playground. Detail of photo by Nick Tenney, Boulder, MT.

metal clamp cuts or key-stone clamp cuts that one can compare with variations on the same basic technology known in nearly all regions that have developed a megalithic stone culture.

Although Dr. Kim Hongnam's comprehensive 2020 study is focused primarily on cut stone and clamping techniques from ancient

China and Korea it provides very good sample world-wide of the various types of clamp cuts used in mega-



**Fig. 10.** The archaeological site of Delphi in Greece (regarded location where the oracle of Apollo spoke). The foundation contains dozens of similar keystone or other cuts as at the Montana site near what is called Giant's Playground. Wikimedia Commons.

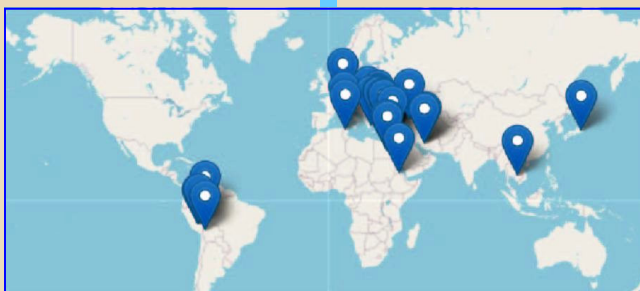
lithic stone work and is highly recommended for anyone who wants to learn more about this remarkable

### References

Hongnam, Kim. 2020. A Study of Stone-joint Metal Clamps in China and Korea during the 6th–8th Centuries. *The Silk Road* 18: 81–108.

### Concluding thoughts

Given that the Old World, Asian and South American



**Fig. 11.** 'Pre-Montana' World-wide distribution of known keystone cuts, from Tracing Origins, A hobby to the Origins of Civilization.

subject of heavy stone work in the ancient past.

Fig. 10. Small portion of the archaeological site of Delphi in Greece showing similar metal clamp style cuts as at the Montana megalithic site. (The site of Delphi, now a protected UNESCO World Heritage Site, is what some may recall from ancient Greek writings is the location where the oracle of Apollo spoke. It was also regarded as the Center of the earth by the god Zeus).

examples of megalithic clamps from undeniably advanced cultures are seen now in North America, it shows we underestimated Ice Age Man.

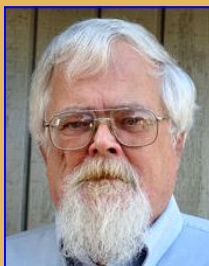
RICHARD DULLUM, retired as a surgical R.N. working in a large O.R. for the past 30 years, is a researcher in early human prehistory and culture. He is also a Vietnam veteran with a B.A. in Biology. Dullum has written or co-written over 50 articles for PCN since 2009 and is also one of PCN's copy editors. All of Dullum's articles in PCN can be found at the following link:

[https://pleistocenecoalition.com/index.htm#Dullum\\_and\\_Lynch](https://pleistocenecoalition.com/index.htm#Dullum_and_Lynch)

# Legacy of Calico Early Man Site Archaeological Project

*Part 3* By Fred E. Budinger, Jr. Budinger & Associates, San Bernardino, CA

Continuing from [Part 2 in PCN #94](#) (March-April 2025)...



**"Fig. 2 shows two Calico scrapers. As with the tools in Part 2, these were treated with an aluminum powder coating. The technique allows researchers and other observers to more easily see the many details of human workmanship..."**

**Note:** The long list of references will be included after the final installment.

In [Part 2](#) (last issue) I gave a general overview of the many stone tool types discovered at the

hand axes, chopping and cutting tools, anvils, hammerstones, and what are called pecking stones.

In [Fig. 1](#), readers can see some of the repeated workmanship in Calico blades that were excavated from



**Fig. 1.** Chalcedony blades from various depths from 1.45 to 4.5 m (approximately 5–15 ft.) in Master Pit I at the Calico Site. Photograph courtesy of Daniel J. Griffin.

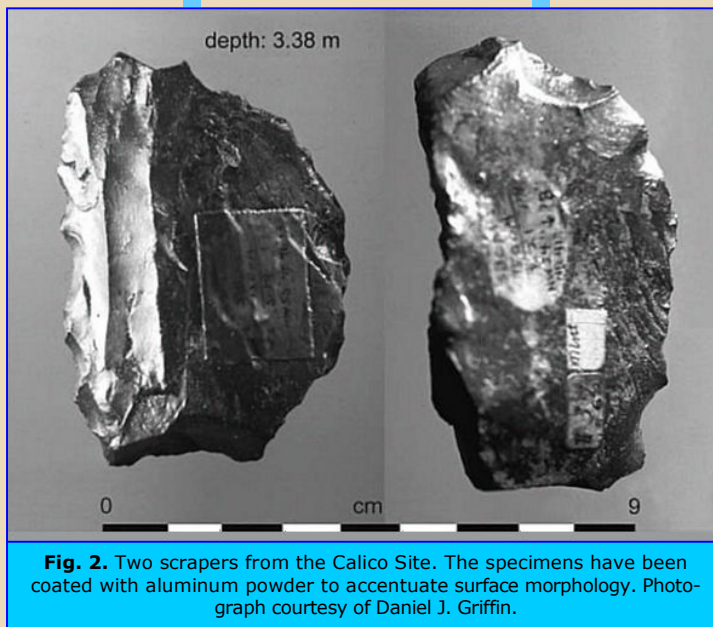
main Calico site in the Mojave Desert outside Barstow, California.

Tools of the associated and nearby Lake Manix site were covered in [Part 1](#).

As a reminder, the Calico tool types include saw-like tools (which are known as denticulates), graters, burins (which are chisel-like tools), reamers, piercing tools, blades, bladelets (smaller-sized blades), and flakes. Among others, heavy-duty tools include

[Part 2](#) also included several photographs of representa-

Master Pit 1 from assorted subsurface depths of 1.45 to 4.5 m. That is approximately 5–15 ft. deep.



**Fig. 2.** Two scrapers from the Calico Site. The specimens have been coated with aluminum powder to accentuate surface morphology. Photograph courtesy of Daniel J. Griffin.

**Fig. 2** shows two of Calico's scrapers. As with the tools in [Part 2](#), these were treated with an aluminum powder coating. The technique allows researchers and other observers to more

easily see the many details of human workmanship.

easily see the many details of human workmanship.

> [Cont. on page 11](#)

## Legacy of Calico Early Man Site Archaeological Project (cont.)

**"In Fig. 1, readers can see some of the repeated workmanship in Calico blades that were excavated from Master Pit 1 from assorted sub-surface depths of 1.45 to 4.5 m. That is approximately 5–15 ft. deep."**

When it comes to Paleolithic stone tools, the various kinds are often not so readily identified without close

Piercing tools, on the other hand, have slender splinter-like spurs without re-touch. Use-wear includes

[Calico] artifacts can be seen by anybody," and, 2.) A respected book author (*Bipoints Before Clovis*) who wrote to Director Schroth about



**Fig. 3.** Nine reamers (rotational tools) from the Calico Site. Reamers show use-wear of clockwise or counter-clockwise twisting motion. Photograph courtesy of Daniel J. Griffin.

inspection (often microscopic), actual tool-making experience or, at a minimum, knowledge of the techniques used to make the different types of tools.

The scraper artifacts shown in Fig. 2 were recovered from a depth of 3.38 m. That is approximately 11 ft. below the surface.

**Fig. 3** shows several clear examples of reamers—important forms of rotational finishing tools. Readers might think of them more in terms of drills or awls. As mentioned in Part 2, most rotational tools are reamers. Use-wear on the working parts of the artifacts indicates minute scaling. That is, very small even microscopic damage details that show the tools were used in either a fine-tuned clockwise or counter-clockwise twisting motion.

crushed tips and minute step-fractures.

*-Continued in Part 4...*

FRED E. BUDINGER, JR., MA, RPA, is Senior Archaeologist at Budinger & Associates and former Curator (1974–1986) and Project Director (2000–2008) at Calico Early Man Site. Over the past several years he has raised concerns and discussed in detail the threatened Calico artifacts and the gradual and deliberate destruction of the site in several articles including [Protecting Calico](#) (PCN #17, May-June 2012), [Saving Calico Early Man Site](#) (2012, same issue), and [The Calico Legacies, December 2014](#) (PCN #32, Nov-Dec 2014). He has also provided several brief news items on the degraded state of U.S. archaeology and lack of preservation efforts and the subject of truth in science including [An important update on the state of affairs at Calico Early Man Site](#) (PCN #39, Jan-Feb 2016). In that report Budinger encapsulated current "professional" rulings: 1.) "No

flying out to California from Virginia to photograph selected Calico specimens for an up-coming book was given the following response: "The Calico collection is no longer available for study." Budinger continues his



**From PCN #32:** The author as Project Director of Calico measuring objects such as in Figs. 1–2 in the wall of Master Pit I. Photo: T. Oberlander.

efforts to keep Calico site from being buried by popular archaeology as have other sites such as Hueyatlatco.

# Member news and other info

## Quick links to main articles in PCN #94:

### PAGE 2

#### [Cultural significance of rock art](#)

for Saudi Arabia's Vision 2030, Part 3

Abdulrahman Albalawi

### PAGE 4

#### [Pleistocene Lake Manix](#)

in a landscape once full of lakes

Tom Baldwin

### PAGE 6

#### [These are not 'cart ruts'](#)

Tryst Falls, Missouri, Part 2

Richard Dullum

### PAGE 10

#### [Legacy of Calico](#)

Early Man Archaeological Project, Part 2

Fred E. Budinger, Jr.

### PAGE 12

#### [Member news and other info:](#)

#### [A stellar reminder, cup-marks, AI objectivity](#) -jf

Michael Cremo, John Feliks, Gemini AI

[S. Antiquitus](#) backstory to Ed.'s YouTube channel

John Feliks

#### [Links to Issues 91-93](#)

### PAGE 14

#### [Pleistocene civilizations](#), Part 13

Anthony Peratt and Fay Yao

### PAGE 16

#### [Debunking evolutionary propaganda](#), Part 17 of series

(Ordovician) in reverse for fossil-record-first perspective

John Feliks

## Can new evidence from Romania help fix science damage from anthropology?

In February, **Professor Dragos Gheorghiu** (National University of Arts, Bucharest), land artist, pyrotechnics expert, and prolific scholar and author of several experimental archaeology articles in *PCN* (c. #s 16–75) kindly sent an important update on Romania's contributions to anthropology. Unfortunately, *right-out-of-the-gate* the paper, "Hominin presence in Eurasia by at least 1.95 million years ago," by S.C., Curran *et al.* 2025; *Nature Communications* 16 (836): 1–11, descended to paleoanthropology's standard ideologically-loaded attachment to the word, *hominin*, for what in normal sciences would be an objective taxonomic category—*human*. We've long covered this part of the misguided science of taxonomy (recently a genus of Ordovician brachiopod name-changed 6 times for reason of the ideology). Discard the failed 165-year ideology to recognize and confirm how off the find shows our interpretations of prehistory have been and the find is profound.

Recently, early *PCN* contributor and independent researcher **Brett Martin** (*PCN* #48) sent a perspective on how the new evidence vindicates controversial European artifacts called 'eoliths' discovered in the 1800s but mainstream rejected ideologically as *too old*. **Richard Dullum's** enlightening 7-part series on the history of eoliths (*PCN* #75–82) may foreshadow what the quest for truth in science may be up against with Romania's evidence of stone-tool cut-marks in a way similar to Calico and **Fred Budinger's** evidence of early humans in the Americas (this issue). Martin describes the perennial dilemma succinctly:

"tools historically dismissed based on their age rather than their obvious workmanship."

## Anthropology's unaccountability keeps pushing false human taxonomies

No one regards their neighbors or fellow humans as 'hominins.' However, Donald Johanson's commandeering from Mary Leakey the famous 3.6 million-year old Laetoli footprints had just that effect. Dr. Johanson changed the footprints from the oldest "human" footprints (Mary Leakey's designation) to those of an australopithecine ape, deceiving the public and 'educated' science community alike for the next 47 years. Unacceptable science.

This kind of academic behavior was fully accepted by the science community being itself *pre-duped* by the same ideology. As long as science like this continues without correction misleading the public continues. Here is the history:

Source (with its own bolds): Willis, Delta. 1992. *The Leakey Family: Leaders in the Search for Human Origins*. p. 100.

"In 1978... Johanson was one of many scientists scheduled to speak at a Nobel Symposium in Sweden... The conference would honor **Mary Leakey**, who would receive a medal from the King of Sweden for her scientific work.

**Mary Leakey** received the Golden Linnaean Medal, the first woman to do so. But she also endured one of the most embarrassing moments in her life. **Johanson** spoke before she did, and announced the new name for the species from Ethiopia—and in this species, he included **Mary Leakey's** discoveries from **Laetoli**. In fact, the jaw LH 4 was featured as the type specimen...

**Johanson** talked at length about the discoveries at **Laetoli**, which scooped **Mary's** own speech. She was angry and embarrassed. During the coffee break, she confided to **Richard**: 'How am I going

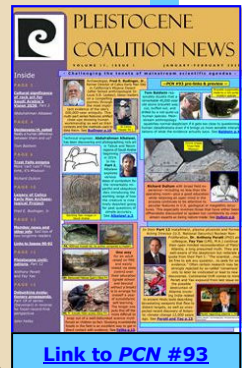
to give my paper now? It's all been said.'...

More controversial, **Johanson** had named her discoveries, using a designation that was totally at odds with what she believed. Because **Johanson** named them first, that name stuck. When she stood up to give her talk, **Mary Leakey** could not say that the finds from **Laetoli** were *Homo* as she thought they were. She just expressed her deep regret that 'the **Laetoli** fellow is now doomed to be called *Australopithecus afarensis*.'"

Knowing this now might the reader be open to rethinking their beliefs? See **Fig. 1**. -jf



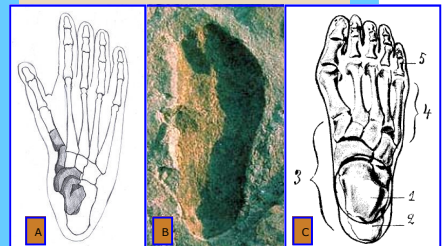
[Link to PCN #94](#)



[Link to PCN #93](#)



[Link to PCN #92](#)

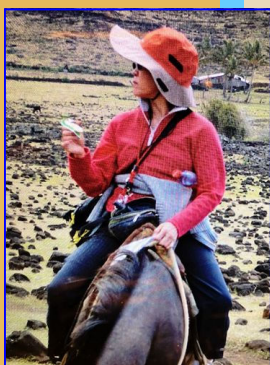


**Fig. 1. More telling than an IQ test.** When schools do not teach children objectivity in their own thinking they actually graduate from grade school and university believing that (A) the foot of an australopithecine ape matches (B) the famous 3.6 million-year old Laetoli 'human' footprints commandeered from Mary Leakey by Donald Johanson and assigned to *Australopithecus*. Children skipping education like that will readily match Laetoli to (C) a human foot. -jf

# Pleistocene civilizations, Part 14

By Anthony Peratt, PhD., and W. F. Yao, LMS, M.A.

**"Oppenheimer was a Sanskrit scholar well aware of dev-**



**Supplement** for more depth on plasma (an underlying subject in this series). This 2004 television special, [Universe: The Cosmology Quest, Episode 2: The Electric Universe and Plasma Physics](#), challenges yet another theory taught as fact by the science community.

**astating weapons as described in the Bhagavad Gita and the Mahabharata."**

Continuing from [Part 13](#), (PCN #94, March-April 2025). Part 14 consists of Sections 16–17 of the 'outline' in [Part 1](#) (PCN #82, March-April 2023).

As explained at the beginning the series had a complex preplanned arrangement with some need for flexibility in 'part' numbering, etc., including this new series serving as 'prequel' to a verbatim reprint of Dr. Peratt's original 2-part series, *The Pillars of Hercules* (*Pillars of Hercules*) [PCN #63, Jan-Feb 2020]. That makes Part 14 the final installment of the 'prequel' series. As laid out in Part 1, this will be followed next issue by the reprints of *The Pillars of Hercules*.

### Plato's Atlantis, a story without end

Plato's account of Atlantis ends abruptly as it disappeared off the face of the map, literally, long before his time. Below are a few final thoughts regarding ancient Hindu accounts of devastating weapons possibly part of a multilateral war resulting in Atlantis as a target in which it was vaporized by a multi-megajoule thermonuclear weapon in about 3 milliseconds.

Plato had no knowledge of this possibility. However, we discussed it early in Part 1 in context of atomic bomb inventor J. R. Oppenheimer. Oppenheimer was a Sanskrit scholar well aware of devastating weapons as described in the *Bhagavad Gita* and the *Mahabharata*.

Evidence for such an event is replete on Earth with radioactive and intense de-

struction patterns. Those places affected (modern names which are not conclusive) include India, Egypt, Antarctica (pre-ice), Bolivia, Greece, Peru, Brazil, Cambodia, Pakistan, Indonesia, Java, and Malta.<sup>1, 2</sup>

### On quotations from the Mahabharata regarding devastating weapons

In countless popular books and on the Internet there are several well-known quotations from the *Mahabharata* about devastatingly powerful weapons. Unfortunately, the sources of these quotes and who translated from the original Sanskrit are usually not given. There are also several complete sometimes difficult to navigate interactive pages of the entire *Mahabharata*. To give some understanding about this, the *Mahabharata* was written as a 1.8 million-word epic poem. Finding or trying to cite particular passages is additionally difficult as the most important first English prose translation, which was by Kisari Mohan Ganguli, is not divided into verses (*shloka*) numbers.

The Ganguli translation is especially important to our topic of ancient weapons because it was published 1883–1896. In other words, no skeptic can claim the detailed descriptions of various weapons' effects resembling those of modern atomic bombs were influenced by the first bomb tests or the Japan bombings in 1945.

One more difficulty is that popular writings appear to combine descriptions from different books or sections of the *Mahabharata* and may also paraphrase them so that in different translations it is

hard to match them. Finally, quotes may be attributed to different books, or not list which particular book at all but only "Mahabharata."

Here is the most famous of the popular descriptions copied repeatedly without attribution. It describes the *Brahmastra* weapon quite well (we discussed it briefly in [Part 11](#), PCN #92, Nov-Dec 2024):

"A single projectile charged with all the power of the Universe. An incandescent column of smoke and flame as bright as the thousand suns rose in all its splendor... [It] was an unknown weapon, an iron thunderbolt, a gigantic messenger of death which reduced to ashes the entire race of the Vishnis and the Andhakas... [The] corpses were so burned as to be unrecognizable. Their hair and nails fell out; pottery broke without cause, and the birds turned white. After a few hours, all foodstuffs were infected... [To] escape from this fire the soldiers threw themselves into streams to wash themselves and their equipment."

–*Mahābhārata*, Drona Parva (per Erich von Daniken c. 1968)

Finally, we would like to end this Part 14 installment with an abridged excerpt from one of Ganguli's translated paragraphs of the *Mahabharata*, the source and pages of which we are confident. One may notice similarities and differences with the above description. Interestingly, being decades before the Manhattan Project Ganguli was baffled by many of the descriptions, finding them foreign to knowledge of his time. However, modern readers are less surprised

<sup>1</sup> A complete global survey of nuclear damage areas has been temporarily lost on our data disks.

<sup>2</sup> The intensity of the proposed thermonuclear device used to destroy Atlantis (much larger than has ever been used on Earth in modern times) is being studied as a possible source of hastening the arrival of the ice-age from the inflow of the temperature of outer space. This was a concern for Earth's largest nuclear explosion in modern times, Tsar Bombe, that was downgraded from 100 MT to 50 MT for this reason.

> [Cont. on page 14](#)

## Pleistocene civilizations, Part 14 (cont.)

**"The Ganguli translation is especially important to our particular topic of ancient weapons because it was published 1883–1896. In other words, no skeptic can claim the detailed descriptions of various weapons' effects resembling those of nuclear bombs were influenced by the first atomic bomb tests or the Japan bombings in 1945."**

knowing such things as facts from visually recorded events:

"When the next day came, Samva actually brought forth an iron bolt through which all the individuals in the race of the Vrishnis and the Andhakas became consumed into ashes. Indeed, for the destruction of the Vrishnis and the Andhakas, a fierce iron bolt that looked like a gigantic messenger of death. ... In great distress...the king (Ugrasena) caused that iron bolt to be reduced into fine powder. ...to cast that powder into the sea."

—*Mahabharata*, Mausala Parva, Ganguli translation, 1883–1896, pp. 6428–6429.

Hopefully, these excerpts give a sense of why—with a physics background and despite popular skepticism—we find this a worthy subject to explore for science's and history's sake. And to remind as we have before, scientists are often convinced they are correct, but that can end fast the moment some new or ignored prior evidence comes to light.

To be concluded in Parts 15–16 (per details above, these are the reprints of *The Pillars of Heracles*).

### References (Parts 1–14 only)

- Pennick, N., P. Devereux, and Robert T. Hale. 1989. *Lines On The Landscape*. London.
- Peratt, A.L. 2015. *Physics of the Plasma Universe*. 2nd ed. Chapter 12.4. "Birkeland's Terrella Experiments." Springer Verlag. New York.
- Peratt, A.L., J. McGovern, A.H. Qōy-awayama, M.A. van der Sluijs and M.G. Peratt. 2007. Characteristics for the Occurrence of a High-Current Z-Pinch Aurora as Recorded in Antiquity Part II: Directionality and Source. *IEEE Transactions on Plasma Science*, 35(4): 778-807.
- Peratt, M.G., and A.L. Peratt. 2006. An intense Z-pinch aurora horn mapped by surveys of recordings from antiquity. *The 33rd IEEE International Conference on Plasma Science*. Traverse City, Michigan.
- Potemra, T.A., M.J. Engebretson, L.J. Zanetti, R.E. Erlandson and P.F. Bythrow. 1988. Satellite observations of currents and waves in space plasmas. *Laser and Particle Beams* (6): 503.
- Science, 2006. ICOPS 2006. IEEE Conference Record—Abstracts.
- Yao, W.F., A.L. Peratt, P. Bustamante, and R. Tuki. 2009. Complete Survey of the Rock Art on Easter Island as Solar-Earth MHD Instabilities Recorded by Mankind in Antiquity. San Diego, May 31–June 5, 2009. Record of Abstracts.

### \*Addendum

My 1991 (2015: 2nd Edition) book, *Physics of the Plasma Universe*, explains in more detail many of the physics topics touched upon in this series. Also, throughout the series, and as a reminder of how the series is organized refer back to our page 1 of Part 1 (*PCN #82*, March-April 2023). It will remind readers that these new installments, together, serve as a prequel explaining portions of the research studies that led to the ideas I originally published in *PCN #63* (Jan-Feb 2020) and to help show how the archaeology and physics topics are interrelated or overlap.

### Abbreviated bios below

(full bios are at start of Part 1):

ANTHONY LEE PERATT, PHD, received his BSEE from California State Polytechnic University, 1963, followed by his MSEE from the University of Southern Cal, 1967. Assigned for two years to Professor Hannes Alfvén, Peratt translated Alfvén's seminal book, *Cosmic Plasma*, into English. Peratt received his PhD in 1971, after Alfvén was awarded the Nobel Prize in Physics. Peratt then joined the UC National Laboratories (Lawrence Livermore in 1972 and Los Alamos in 1981), receiving his 30-yr. UC Alumnus Award in 2005. He spent sabbaticals at the Max Planck Inst. for Plasma Physics, Garching, DE 1975–77 and the Royal Institute of Technology, Stockholm, Sweden 1985/1988. In 1986, he gave the prestigious Norwegian Acad. of Science and Letters Birkeland Lecture. Dr. Peratt later received two U.S. Dept. of Energy (DOE) awards for his experiments and computations. With Prof. Oscar Buneman, Stanford U. (of Bletchley Park fame) Peratt ran the Tridimensional-Stanford fully-3D gravitational and plasma teraflop galaxy code for 14 years in a Stanford-Los Alamos collaboration. 1995–99 Dr. Peratt served in the Dept. of Energy Defense Programs and as Acting Head of Nuclear Nonproliferation. Since then, he served in the Los Alamos Assoc. Laboratory Directorate for Experiments and Computations. Subsequently his research involves the source of petroglyphs as an ancient above-Antarctic intense outburst, with ground GPS measurements and their distribution-orientation with earth-orbiting satellites, in the Americas; Australia, Polynesia (incl. Easter Island), the Alps and Mongolia. 2004–2011 Peratt worked with UPenn Dept. of Archaeology and Anthropology. Dr. Peratt is Senior Editor of the *IEEE Transactions on Plasma Science* and an IEEE Life Fellow, a member of the American Physical Soc., American Astrophysical Soc., and Archimedes

Circle. He acknowledges his tenure at the U.S. Dept. of Energy, Washington D.C., 1995–2000, Dept. of Defense Programs (DP) and Nuclear Nonproliferation (NN). Dr. Peratt is indebted to Professors Hans Kuehl, EE Dept. USC and Zohrab Kaprelian, Dean of Engineering USC, who started him on a course of studies he could not have foreseen.

Website: [plasmauniverse.info](http://plasmauniverse.info)

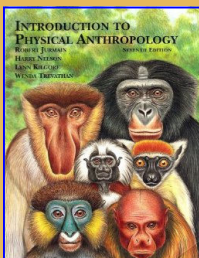
FAY YAO completed post-graduate course work toward a PhD in multi-disciplines; received M.A. in Lib. Science and Sec. Education, UNM, 1971; B.A., Chinese Lit. and Hist., Philippines CKS College, 1969; studied Bus. Admin. and Mathematics, University of the East, Philippines, 1966–69. She is an affiliate member of the Intl. IEEE Computer Soc., IEEE Nuclear and Plasma Sciences Soc., and NM Museum of Science and Hist. Ms. Yao is fluent in English, Cantonese, Mandarin, Haisanese, Fujanese, and reads Tagalog and Spanish. Yao co-founded the Albuquerque Chinese Arts and Language School, 1978, founded the Acad. of Chinese Performing Arts, 2015, and NM Chinese American Speaker Series, 2016. Ms. Yao was Sec. of a UN Model Collegiate Students Organization of the Philippines, 1966–69; Sec., NM League of Women Voters, 1988; Rep. in the Alliance for Better Community Relations, Albuquerque Jewish Fed., 1988–9; State Sec. NM Elem. School Librarians Assoc., 1989; and served as Nat. Rep. to the Nat. Chinese American Citizens Alliance, San Francisco since 2020. She received the 2016 Spirit of NM award by the Chinese American Citizens Alliance for her "outstanding leadership, service... to our community, state, and country." Yao received the 2008 U.S. Congressional Women's Art, Woven Vision Award. Among others, she has done lectures for the UNM Maxwell Anthropology Museum. Yao has co-authored papers in the *Trans. Plasma Sci.*, the *European Physica Scripta*, and *IEEE Spec. Issue. Latin American Workshop on Plasma Physics*, 2018, works representing her GPS and Magnetic Transit petroglyphs orientation investigations interpreting cosmopolitan symbols. She served as a petroglyph archeologist with field work for the Museum of NM Rock Art Recording Project to GPS log Petroglyph Natl. Mon. and other sites. Dr. Yao was first to decipher a Chinese petroglyph panel as describing the evolution, shape, dynamic properties and observational location of the Axis wadi emanating from Earth's surface. She has special interest in how symbols relate to each other worldwide.

# Debunking evolutionary propaganda, Part 16

Overview and links for *Parts 1–15*

**A lifelong reader of textbooks in every field exposes “thousands” of examples of false statements of fact and other propaganda techniques easily spotted in anthropology, biology, and paleontology textbooks**

Reprint from PCN #38, Nov-Dec 2015. This is Part 16 of 21 in reverse to give readers the facts of the fossil record first.



The field is “anthropology.” Anthropology—the study of “humanity”—has a long history of deceiving the public. It is a powerful tool for manipulating both cultural and personal identity.



By John Feliks

One of the most important questions in modern times is that of our origins and prehistory. In recent years the science community through continuous propaganda has managed to convince many that it has answered the question with evolution. The public is being told that evolution is now established fact. This series provides evidence that the exact opposite is true because evolution is in clear conflict with the fossil record.

**Part 1: [Basic propaganda techniques in college textbooks](#) (Issue 23:10–12, May-June 2013)**

**Question:** How does one make an ideology claimed as fact appear overwhelmingly true to students never taught how to think critically?

**Answer: 1.)** Turn science textbooks into propaganda; **2.)** Intimidate students who question the propaganda; **3.)** Withhold conflicting evidence.

**Part 2: [Fictions taught as fact in college textbooks, 1st half](#) (Issue 23:16–18, May-June 2013)**

The statistic equating higher institutional education with belief in evolution is not an indication of critical thinking as naïvely believed. It is an indication of how captive audience propaganda works.

**Part 3: [Fictions taught as fact in college textbooks, 2nd half](#) (Issue 24, July-August 2013)**

**Part 4: [Evolutionists are not qualified to assess 'any' evidence](#) (Issue 25, September-October 2013)**

“The Prezletice human molar has been re-identified as a bear ... and the ‘hominid’ skull from Venta Micena as a horse.”

-Clive Gamble, *The Palaeolithic societies of Europe*, 1999: 116

“The history of paleoanthropology is one of repeated misidentification of fossil ancestors.”

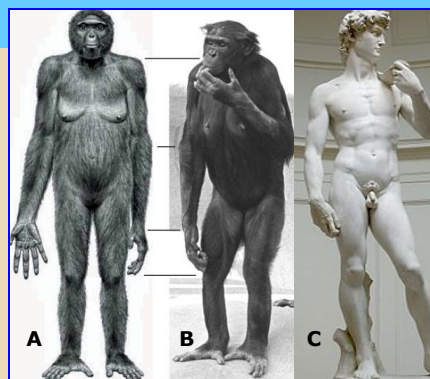
-Sarmiento *et al.* 2002. Morphology-based systematics (MBS) and problems with fossil hominoid and hominid systematics. *The Anatomical Record* 269 (1): 50-66.

**Part 5: [Mandatory U.S.-legislated indoctrination now in place - 1st target, captive-audience children in K-12 science classrooms](#) (Issue 27, January-February 2014)**

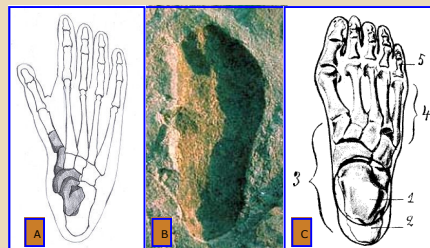
Modern science is in a compromised state having descended to the level of adopting use of *well-known propaganda techniques* to promote the ideology of Darwinism (that complex life and intelligence “evolved” from a batch of chemicals). In the *Next Generation Science Standards* this ideology has been interwoven with actual facts in a way that deceives anyone not objectively informed about fossils. 95% of the propaganda techniques described in *Part 1* are in the document. Americans need to recognize that the “Standards” for biology—legislation to force evolutionism on students while blocking them from conflicting evidence—is corrupted science. They are the result of decades of textbook fraud and a lack of perspective regarding the fossil record. Any grade school subject depending upon tactics such as those discussed is not ready to be taught as science.

**Part 6: [The inconvenient facts of living fossils: Brachiopoda](#) (Issue 28, March-April 2014)**

From the very beginning, Darwin knew he had a *big* problem—the fossil record. According to paleontology’s own numbers it can plainly be seen that the fossil record is not a record of species, genera, families or orders—let alone classes or phyla—evolving one into another but a *very clear record* of thousands of well established organisms which have not changed for tens to hundreds of millions of years.



In the October 2009 issue of the journal *Science*, evolution-trained scientists were quoted that Ardi (A) “doesn’t look much like a chimpanzee ...or any of our closest living primate relatives,” e.g., (B). –Ann Gibbons



Regarding the famous 3.6 million-year old Laetoli human footprints (B), evolutionists actually teach they were made by (A) australopithecine apes, rather than by (C) humans.

> [Cont. on page 16](#)

\*\*\* Links to the prior parts in this reverse reprint series: [Part 17](#), [Part 18](#), [Part 19](#), [Part 20](#), [Part 21](#).\*\*\*

## Overview and links for *Parts 1–15* (cont.)



The idea is to start thinking “dog breeds” for *all* fossil types. The term ‘species’ has long been out of control in biology, anthropology, and paleontology and can no longer be trusted as anything more than a way to differentiate varieties.



### Part 7: " " " [Mollusca](#) (Issue 29, May-June 2014)

**“Like brachiopods, molluscs ... provide for an excellent, unbroken fossil record from the Cambrian to the present. Most of the classes of molluscs living today... were already present in the Cambrian.”**

–*Animals Without Backbones*, Buchsbaum et al 1987, Third Ed., p. 520

**“If my theory be true, numberless intermediate varieties ... must assuredly have existed; ... evidence ... could be found only amongst fossil remains.”**

–Charles Darwin, *The Origin of Species*, 1859, p.179

*Parts 6–12* are based on the main volumes of the *Treatise on Invertebrate Paleontology*. I have also proposed an expanded definition of the term *living fossil* to reflect the true facts of the fossil record. This is to include organisms with remarkably long histories even though they eventually went extinct. Noting that this definition is based on date ranges which are agreed to by international consensus it can be stated that all taxa remain the same since their first appearance. In other words, they do not evolve. The three fossil snails at left extend from the Early Cambrian (542 million years ago) to the Present. They demonstrate a clear continuity through time. Such continuity is not helpful to Darwinism and so it is concealed through obfuscations in the taxonomic naming systems used in biology, paleontology, and anthropology. In these evolution-corrupted fields, if necessary evolutionary categories are not found, they are simply created. The top two fossils are not only called different species, but different genera, different families, different orders, and even different subclasses. *The bottom fossil is regarded a different class entirely*. The public needs to realize that they’ve been railroaded. Think *dog breeds* not evolutionary genera or classes.

### Part 8: " " " [Porifera and Cnidaria](#) (Issue 30, July-August 2014)

**“Modern corals...may have evolved from some nonskeletonized common ancestor that existed in the Paleozoic but left no fossil record.”**

–Bruce L. Stinchcomb, geologist, paleontologist

This is a standard trick in Darwinism to explain why evolutionary claims *do not match* the physical evidence of the fossil record. It is applied by mainstream PhDs trained in biology, paleontology, and anthropology to every single creature and every type of creature known. Paleontologists cannot explain the origins of *any* organisms without recourse to a pantheon of invisible “unknown” ancestors. Yet, they can tell you the exact date range to the decimal of when *fossilized* creatures lived. This means that their desired explanation does not match their accrued facts.

### Part 9: " " " [Echinodermata](#) (Issue 31, September-October 2014)

**“The apparent first appearance of a crinoid occurs in the Lower Ordovician of England. ... It was not an intermediate form. It was not a primitive link with older ... ancestors.** The lack of a sequence of transitional types leading back to the ancestral stock is, of course, the chief reason for the uncertainty about origin of the class.”

–Paul Tasch, geologist, *Paleobiology of the Invertebrates*, 1980 Edition: 759 & 761.

**Question.** According to the physical facts of the fossil record (not imaginary family trees, extrapolations from genetics, or other tricks of the Darwinism trade), what are the ancestors of the echinoderms—crinoids, starfish, and sea urchins?

**Proposed answer.** Crinoids, starfish and sea urchins.

Echinoderms appeared hundreds of millions of years ago and survive today. And like all invertebrates, the origin of these creatures is a frustration to scientists incongruously teaching evolution as fact. Tasch’s description implying that the ‘intermediate’ ancestors of other animals are less uncertain than those of crinoids is misleading because *not one* has been established. Sciences that teach as fact the opposite of what the cumulative physical evidence actually says need to be questioned. It doesn’t matter how many adherents there are.

### Part 10: " " " [Bryozoa](#) (Issue 32, November-December 2014)

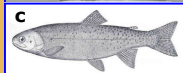
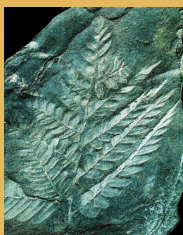
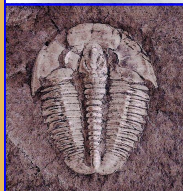
**“Bryozoa is one of the most puzzling phyla in the animal kingdom and little is known about their evolutionary history.”**

–Fuchs, J., M. et al. 2009. The first comprehensive molecular phylogeny of Bryozoa (Ectoprocta) based on combined analyses of nuclear and mitochondrial genes. *Molecular Phylogenetics and Evolution* 52 (1): 225.

The title of the above paper might make readers imagine that science is on its way to explaining bryozoans in evolutionary terms. This is not the case. Although paleontology and biology consider bryozoans—or moss animals as they are popularly known—to be primitive, simple organisms that evolved like everything else in the Darwinist worldview, the actual real-time facts of the fossil record tell a different story. What the record actually shows is that after nearly 500 million years bryozoans are still bryozoans—just like when they first appeared. They didn’t evolve from anything else; nor did they evolve into anything else. The quote itself may seem innocuous but it uses two standard tricks that prevent readers from considering bryozoans objectively: 1.) Not “little is known,” but truly nothing is known about the so-called evolutionary history of bryozoans. The problem, as in all such papers, is that evolution is presented as a ‘given’ despite the fact that not a single group of organisms has been established in evolutionary terms; and 2.) is the misleading implication that bryozoans are a uniquely puzzling group. This too is a standard technique used in the community. The idea is to imply that evolutionary histories for organisms other than the ones you are currently talking about are established, which, is not true.

> [Cont. on page 17](#)

## Overview and links for *Parts 1–15* (cont.)



### Part 11: " " [Arthropoda](#) (*Issue 33*, January-February 2014)

**"So where did trilobites come from? ...The evidence is neither clear nor unambiguous."**

-Sam Gonn III, PhD, biologist; trilobite authority, and webmaster of the comprehensive resource [trilobites.info](#)

Dr. Gonn's statement about the mysterious origins of trilobites should have a familiar ring to it. As pointed out earlier, this is the same observation made of *all* organisms. But the public doesn't know it because it is routine in the evolution community to admit "problematic evolution" for the organism at hand while implying that other organisms have been figured out in evolutionary terms. Proof of evolution has not been established for a single group—not one species, genus, family, order, class, phylum, or any other category.

### Part 12: " " [Trace fossils & graptolites](#) (*Issue 34*, March-April 2014)

**Trace fossils**, except for footprints, are little known to the public. They concern the passage of time. Trace fossils represent the actual activities or experiences of ancient organisms as they went about their daily lives. They include tracks, burrows and borings, and even records of unusual events that might only have happened to a single individual. Trace fossils preceded "long exposure" photography by hundreds of millions of years. They actually record events in time in high resolution 2D and 3D images and in increments as small as weeks, days, hours, and even minutes and seconds. At their best, they are the equivalent of 3D sculptures of real-time events making them 4-dimensional objects. In contrast to Darwin's hope that the fossil record would prove to be a record "poorly kept," one can hardly ask for a more perfect record of anything that happened in the ancient past. **Graptolites**, mysterious fossils believed to represent animals extinct for the past 350 million years, were recently discovered to be alive in the Indian Ocean adding them to a growing list of 'living fossils.'

### Part 13: " " [Plants](#) (*Issue 35*, May-June 2015)

**"Just a single species of green algae gave rise to the entire terrestrial plant lineage." ... "Exactly what this ancestral algae was is still a mystery."**

*Biology*, 6th Ed., Raven *et al.*, 2002: pp. 735 & 736.

The above is a standard evolutionary false statement of fact followed by a direct admission from the authors that they have no idea what they are talking about. *Part 13* is filled with similar quotations not only from textbook authors but from plant specialists demonstrating that they have no idea where plants came from, how they supposedly morphed into each other, or why many so-called "primitive" plants seem to have arrived on the scene after supposedly more "advanced" plants.

**"The genome size of these reputed 'living fossils' [royal ferns] has remained unchanged ... at least 180 million years."** -Bomfleur B, *et al.* 2014. Fossilized nuclei and chromosomes reveal 180 million years of genomic stasis in royal ferns. *Science* 343 (6177): 1376.

### Part 14: " " [Fishes and invertebrates](#) (*Issue 36*, July-August 2015)

**"The evolution of craniates [animals with skulls] may be characterized as... profound shifts... new structures without any ancestral counterpart."**

-John G. Maisey; Curator, Vertebrate Paleontology, American Museum of Natural History, N.Y. *Discovering Fossil Fishes*, p.34

One of the most profound sudden appearances in the 'vertebrate' record is that of the placoderm fishes. Among many other 'firsts'—that happened all at once—they were the first vertebrates with jaws. Not only did they appear out of nowhere as tiny fish but they soon spawned the world's first super-predator, a 33-foot long, 8,000 lb. monster called *Dunkleosteus*. It has been determined that the bite of *Dunkleosteus* equaled 1,100 lbs. of force translating to 8,000 lbs. per square inch at the tip of a fang. How does natural selection turn something that isn't even the nibble of a minnow into the largest and most powerful biological crushing machine on earth—accompanied by 2-inch thick armor plating—without leaving a trace of the process in the fossil record?

### Part 15: [Tetrapod evolution credibility questioned via invertebrate fossils](#) (*Issue 37*, September-October 2015)

**"We knew that tetrapods [animals with 4 limbs]...evolved from fish. ... Almost certainly no single scenario can account for all the [hindlimb] stages. ...We may never piece together the entire puzzle of tetrapod evolution."**

-Jennifer A. Clack, PhD. 2005. Getting a Leg Up on Land: Recent Fossil Discoveries Cast Light On the Evolution of Four-limbed Animals from Fish. *Scientific American*, Dec. 2005. Quoting pp. 100 & 107.

**Question:** How does Dr. Clack—the leading tetrapod authority—go from essentially saying, "We have tetrapod evolution resolved," to "Well, we really don't have a clue"? **Answer:** Evolutionary writers become bolder and less accountable the higher up the taxonomic ladder.

Apart from propaganda, modern Darwinists divert attention away from the lack of evidence for evolution in the fossil record in two primary ways. One of these is to say that the changes are actually genetic. The other is appealing to 'unknown ancestors.' The convenient quality of each of these is that they involve things that are invisible. It is my hope that readers will begin to realize there is something amiss in the science community concerning the subject of origins and that research in this area should be just as objective as in any other.

JOHN FELIKS has specialized in the study of early human cognition for 20 years demonstrating that human cognition does not evolve. Earlier, his focus was on the invertebrate fossil record studying fossils in the field across the U.S. and parts of Canada as well as studying many of the classic texts such as the *Treatise on Invertebrate Paleontology and Index Fossils of North America*. Except for a few public domain images, all scans in this article are of fossils recovered by the author direct from formations across the U.S. and Ontario, Canada, over a 30-year span.



## The Pleistocene Coalition

Prehistory is about to change

- Learn the real story of our Palaeolithic ancestors—a story about intelligent and innovative people—a story which is unlike that promoted by mainstream science.
- Explore and regain confidence in your own ability to think for yourself regarding human ancestry as a broader range of evidence becomes available to you.
- Join a community not afraid to challenge the status quo. Question with confidence any paradigm promoted as “scientific” that depends upon withholding conflicting evidence from the public in order to appear unchallenged.

**PLEISTOCENE COALITION  
NEWS**, Vol. 17: Issue 3  
(May-June)

© Copyright 2025

### PUBLICATION DETAILS

EDITOR-IN-CHIEF/LAYOUT  
[John Feliks](#)

COPY EDITORS/PROOFS  
[Tom Baldwin](#)  
[Richard Dullum](#)

SPECIALTY EDITORS  
James B. Harrod, Rick Dullum,  
Matt Gatton

Pleistocene Coalition co-founder,  
copy editor and advisor emeritus  
[Virginia Steen-McIntyre](#)

### CONTRIBUTORS to this ISSUE

Fred E. Budinger, Jr.

Daniel J. Griffin

Abdulrahman Albalawi

Brett Martin

Mick and Daisy Hobday

Carl Adam Carter

Anthony Peratt

Fay Yao

Dragos Gheorghiu

Tom Baldwin

Richard Dullum

John Feliks

***Pleistocene Coalition  
News is produced by the  
[Pleistocene Coalition](#)  
bi-monthly  
since October 2009.  
Back issues can be found  
near the bottom of the  
PC home page.***

To learn more about early  
man in the Pleistocene visit  
our website at

[pleistocenecoalition.com](http://pleistocenecoalition.com)

**The Pleistocene Coalition** celebrated its fifteen-year anniversary September 26, and the anniversary of *Pleistocene Coalition News*, October 25. *PCN* is now in its sixteenth year of challenging mainstream scientific dogma.